

Rural Pact Conference

15-16 June 2022



Tackling medical Deserts in rural Areas

Boosting Collaboration between Actors on basis of Citizens' Needs

Some examples from mutuals

Jessica Carreño Louro

Project Manager

*Association Internationale de la Mutualité
(AIM)*



Rural Pact Conference

15-16 June 2022



What is AIM

What is a mutual?

What's AIM?

- 54 members from 28 countries in Latin-America, Africa and Europe
- Healthcare payers: statutory health funds and 'mutuals'

What's a mutual?

- Our specificities: not-for-profit + democratic governance + solidarity
- Our objectives: guarantee universal access to healthcare and LTC but also social services, with a broad understanding of health and looking at all its determinants

Why are we here?

Medical deserts, a growing issue, including for rural areas

Is it really a problem?

- European Commission report on Demographic change confirms it
- Rising demand for care and long-term care due to ageing

Good news!

- Action can be taken (see also [our position paper](#)); we all have a role to play
- Some examples from our members:
 - Achieving more integrated and collaborative care models
 - Developing innovative solutions
 - Tackling workforce problems
 - Collaborating across borders
 - Supporting social economy actors



Solidarity Proximity Counters – FIMIV Italy

Observation/needs:

Profound changes in society; social protection systems incapable of responding adequately to new risks

- ☐ need a new proximity welfare model that is inclusive and capable of understanding difficulties and answering needs in a comprehensive and integrated manner

Proposal:

- create a physical, virtual and itinerant location, where community operators can orient and support the applicant to make use of the services offered by mutuals and other public and private organisations operating in the territory in various fields (social, welfare, health, work, etc.).
- facilitate the procedures for accessing them and help those in difficulty and in more fragile conditions to find solutions to their problems.
- develop services close that answer the needs of people (eg brain labs)



A bus for dental care— FNMF - France

Observation/needs:

Imbalance in the distribution of dentists across the country which causes difficulties in access to dental care

Proposal:

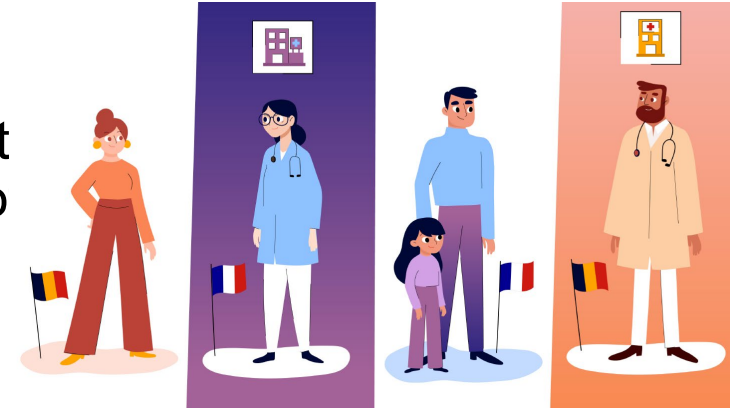
- facilitate access to oral health care for people with ageing disabilities in the north of the department of Landes, which is affected by low medical demography
- two dentists provided dental services in a specially equipped bus, five days a week, for nine nursing homes (EHPADs) and six town centres as close as possible to the people concerned
- during the health crisis, the bus was first adapted to focus on emergency care, then transformed into a mobile vaccination centre in 2021



InTerESanT – Cross-border Care – MC - Belgium

Observation/needs:

Need to improve health care conditions for people living on both sides of the Franco-Belgian border, who are often far from a satisfactory health care on their territory



Proposal:

- study patient flows, the nature and financial volume of the care sought in the establishments at border regions and survey the needs, existing hospital medical provision and possible medical cooperation along the border, in order to consider new cooperation.
- ensure the harmonisation of tools, practices and procedures, and deploy an online portal along the border
- provide the population and health professionals with a website containing the information they need to know, including an interactive map of the zones and establishments concerned
- study possible improvements to the current system and the possible development of new projects or tools in one or more cross-border pilot territories.

Thank you

